



Together Homes



PRIORY MEWS HORNCHURCH

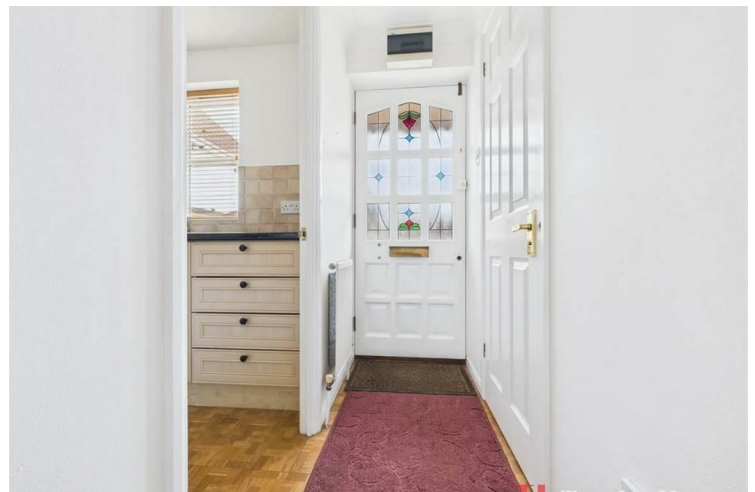
£300,000

Offers in excess

Perfectly nestled in the peaceful cul-de-sac of Priory Mews, Hornchurch, this well-presented one-bedroom terraced house offers an ideal opportunity for first time buyers looking for a stylish and low maintenance home.

As you enter, you're welcomed by a bright and airy lounge that overlooks the private rear garden, creating a perfect space to relax or entertain. The fitted kitchen is practical, while a convenient downstairs W/C adds to the home's thoughtful layout.

Upstairs, the spacious master bedroom benefits from its own dressing area and an en-suite, providing a private and comfortable retreat. There's also a generous loft, under stair storage and an airing cupboard in the bedroom.





Floor 0



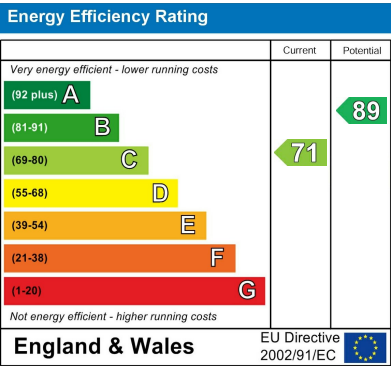
Floor 1

Approximate total area⁽¹⁾
678.34 ft²

(1) Excluding balconies and terraces

While every attempt has been made to ensure accuracy, all measurements are approximate, not to scale. This floor plan is for illustrative purposes only.
Calculations are based on RICS IPMS 3C standard.

GIRAFFE360



Agents Note: Whilst every care has been taken to prepare these particulars, they are for guidance purposes only. All measurements are approximate and are for general guidance purposes only and whilst every care has been taken to ensure their accuracy, they should not be relied upon and potential buyers/tenants are advised to recheck the measurements

Together Homes
21 Station Parade
Hornchurch
RM12 5AB

01708 320 600
sales@togetherhomes.co.uk
togetherhomes.co.uk

